



**ELSEWEDY**  
**ELECTRIC**

# **CORPORATE BROCHURE**

2023 / 2024

**Empowering** *Generations*

# ABOUT ELSEWEDY ELECTRIC



A global leader that has evolved from a local manufacturer of electrical products into a giant provider of integrated infrastructure solutions; with over 18,000 employees and more than USD 4.8 billion revenue. We Operate in five key business sectors: Wire, Cable & Accessories, Electrical Products, Engineering & Construction, Digital Solutions, and Infrastructure Investments. With a strong presence in 19 different countries, 31 production facilities are spread across African and Asian countries including Egypt, Algeria, KSA, Qatar, Indonesia, Pakistan, and Tanzania. We export a wide range of high-end products to over 110 countries worldwide. At the heart of our approach is an all-in-one integrated Engineering, Procurement & Construction (EPC) service which enables us to deliver the most complex turnkey projects on time and with the highest efficiency.

A vital part of our mission is ensuring that the communities where we operate develop and flourish. We work to facilitate the global transition toward a sustainable energy future, whereby we established green energy projects and smart cities across Africa, the Middle East, and Eastern Europe. In alignment with our 2030 sustainability strategy, we aim to extend and enhance our positive impact, provide energy services to a growing customer base, and drive decarbonization, digitalization, and sustainable transition in Egypt and beyond.

Our growth has been driven by hiring talents and empowering businesses and communities where we operate. We enable customers to digitize and meet the challenges of an ever-changing world. Our extensive range of digital solutions allows them to become smarter, faster, and more agile. We are committed to doing our best to serve our customers while caring for the environment. We aim to use our knowledge of our environmental impact to better develop more sustainable business scenarios and evaluate our future policies.

## A leader in integrated energy, infrastructure, and digital solutions.

**85+ years  
of evolution**



Financial strength



Product diversity



Sector expertise



Geographic reach

## End-to-end solutions



Power generation



Power transmission & distribution



Construction & infrastructure



Digital solutions



Projects development & Renewable energy



Industrial development



# WIRE, CABLE & ACCESSORIES

With over 40 years of experience in the manufacturing industry, ELSEWEDY ELECTRIC'S product portfolio provides a comprehensive range of wire, cable, and accessories that comply with international standards and are recognized locally and globally. We pride ourselves on our ability to provide the most reliable, cost-effective, high-quality products and innovative solutions for our customers. With a reach of more than 100 countries and an annual production capacity of approximately 350,000 tons, we offer power, special & telecom cables, winding wires, OHTL & OPGW, steel applications, insulators, cable accessories, explosion-proof equipment, and plastics.

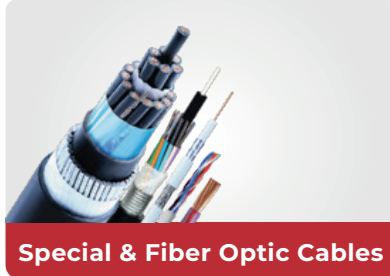
## 17 Factories

## Up to 500kV

## 350K+ Annual Total Capacity Tons Wire & Cable



Energy Cables



Special & Fiber Optic Cables



OHTL & OPGW



Winding Wires



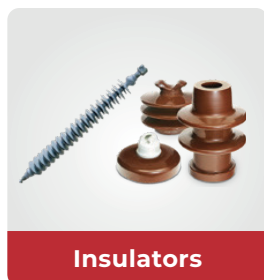
Cable Accessories



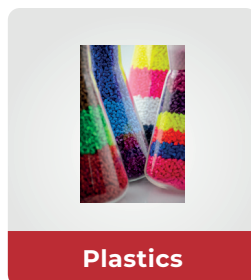
Steel Applications



Metals



Insulators



Plastics



Explosion-Proof Equipment



# ELECTRICAL PRODUCTS

In an ever-changing world, with new developments arising each day, we strive for consistency by constantly innovating and adapting our electrical products and services to stay one step ahead of our customers' needs. We provide a wide range of world-class, trusted, safe, and reliable solutions. We offer tailored services to a variety of distinct industries worldwide. We offer Transformers, Busways, Motors, and Fiberglass Poles, produced and sold through 10 manufacturing facilities and 12 sales offices across Africa, Asia, and America. Our products' quality has been tested and certified according to international specifications and offered at competitive prices to our customers' convenience.

## 10 Factories

## 750MVA/500kV Transformers

## 30000 MVA Production Capacity

### Substations

- Mobile
- Package / Compact



### Transformers

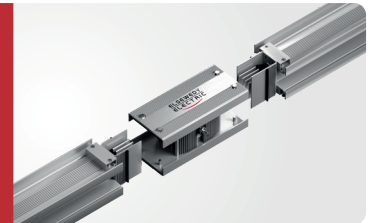
- Power
- Oil Immersed Distribution
- Cast Resin Dry



### Motion Appliances



### Busway



### Fiberglass Lighting Poles





# ENGINEERING & CONSTRUCTION

As an expert in turnkey infrastructure, power generation, transmission, distribution, mobility, public & civil work, and environmental solutions projects, we strive to offer our customers an unparalleled experience in delivering fast-track turn-key projects. Excellence, consistency, diligence, and collaboration are the core values of our engineering and construction business. Our highly qualified team of certified experts in engineering, construction, and project management is entrusted with carrying out complex projects, through which we managed to produce 23GW in 10 years. We have a total of 500+ projects in 35 countries.

**500+ Projects**  
Across 35 Countries

**23+ kilometers**  
of Distribution Networks

**23 Gigawatts**  
Total Delivered Power

**Power Generation**

- Thermal
- Solar
- Wind
- Hydropower



**Power Transmission & Distribution**

- Overhead Transmission
- Electrical Substations
- Electrification & Lighting
- Mini Grids



**Public & Civil Work**

- Roads & Bridges
- Commercial & Special Buildings
- Governmental Projects & Infrastructure
- Ports
- Monument Restoration



**Water & Wastewater Solutions**

- Water and Wastewater Treatment
- Desalination
- Networks & Pumping Stations
- Reclamation Projects



**Infrastructure Projects**

- EPC Services for Industrial and Agricultural projects
- Steel Manufacturing & Installation
- Center Irrigation Pivot



**Transportation & Mobility**

- ITS
- Underground Solutions
- Track Control
- Track Works & Renewal
- Signaling Solutions
- Telecom & Smart Solutions
- EPC Ports Solutions





# DIGITAL SOLUTIONS

Elsewedy Digital is a global system integrator focusing on large-scale end-to-end, fully integrated software and hardware solutions that enable immense digital transformation. Our mission revolves around smart digitization so that our clients can reap more business benefits from their technology investments. Our services are organized under several categories: telecom infrastructure, ICT infrastructure, complete data center setup, ELV systems, IoT & smart solutions, software, enterprise, and financial services solutions, industrial and grid automation, and cloud services. We have an extensive network of technology partners in every domain, and our solutions cater to many industries, including governments, utilities, telecom operators, oil & gas, enterprises, and financial institutions.

**100 Million**  
Electric Meters Installed

**3000** Employees

**1k+ successful**  
Implementations

## Energy & Water Management

- Energy Solutions
- Water Solutions
- Digital Platforms
- eMobility



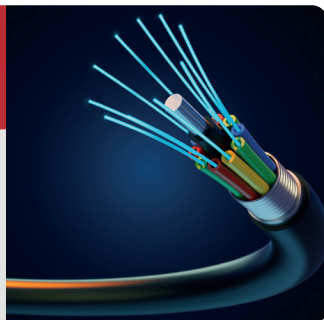
## Integrated Solutions

- Data Centers
- ICT Infrastructure
- ELV
- IOT & Smart Solution



## Telecom Infrastructure

- Back Bone and last Mile & Fiber Networks
- GSM Network Roll Out



## Automation

- Industrial Automation
- Utility Automation



## Cloud and Analytics

- Cloud Services
- Data & AI Services
- Business Automation Services





# INFRASTRUCTURE INVESTMENTS

Our Investments are designed to make a difference in people's lives. We develop industrial communities that help create jobs and support economies to thrive.

Under the Independent power producer (IPP) scheme, we invest in green power generation projects because we believe in sustainable development.

Ports & Logistics has significantly contributed to Egypt's Ports & Logistics sector, fostering local economies and employment.

Also, we excel in utility management and distribution from value engineering, operations & maintenance, billing and collection. Along with integrated facility management offering hard, soft and support services.

**27 Million**  
m<sup>2</sup> Industrial Parks

**193.3 Megawatts**  
Energy Investment

**500K SQM**  
Developed warehouses & Dry Port

**427.5 MVA**  
Total Contracted Capacity



Industrial Development



Ports & Logistics Development



Energy & Water Investment

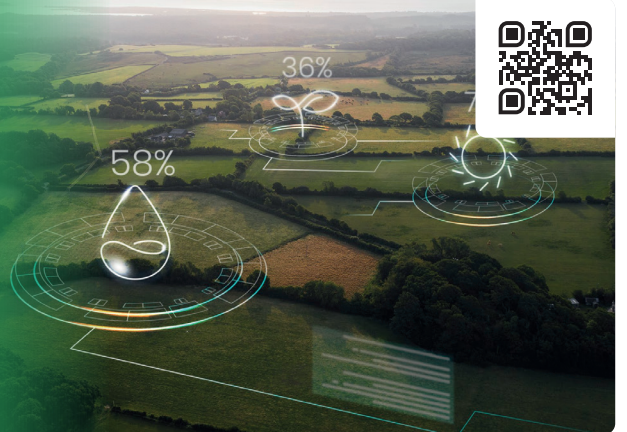


Utility & Facility Management

# PROMOTING SUSTAINABILITY, HSE, & TECHNICAL EDUCATION EXCELLENCE

## Sustainability

We believe in our moral obligation to society, and one thing that has not changed during our years of growth is our commitment to our communities. All companies across the group implement our ESG policies and vision focusing on environmental impact, social equality, and strong governance. We monitor our carbon footprint and mitigate the environmental impacts of all business lines, factories, and facilities.



## STA

Elsewedy Technical Academy - STA, affiliated with ELSEWEDY ELECTRIC Foundation (NGO), provides 3 years of secondary level education adopting a dual education model combing 80% training vs 20% theoretical, per international standards under the auspices of the Ministry of Education & Technical Education.

STA offers customized Technical Education and Training for major industries following the latest standards. It also provides training programs to the existing workforce and unemployed youth.



## Health, Safety & Environment (HSE)

Employee safety is of high priority at ELSEWEDY ELECTRIC. There has been a significant improvement in the safety performance of the company.





# OUR PARTNERS IN SUCCESS



**\$4.8  
Billion**

Revenue

**27 sq  
Meters**

of Sustainable  
Industrial  
Communities

**4k+** Overhead Transmission Lines

**23k+** Distribution Networks

**23 Gigawatts**

Total Number of Delivered Power

**95+ substations**

Indoor & Outdoor substations

**Global  
Presence**



**31**

PRODUCTION  
FACILITIES



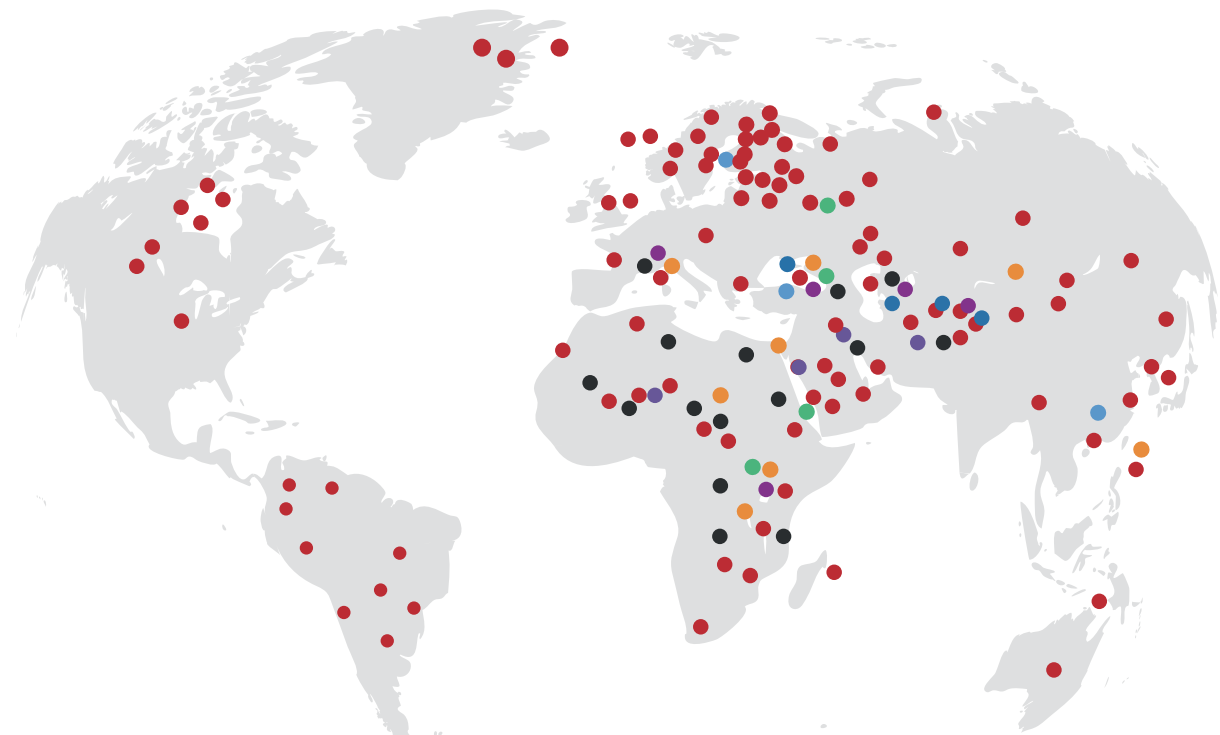
**19**

OPERATION  
COUNTRIES



**110**

EXPORTING  
COUNTRIES



Wire, Cable,  
& Accessories

Electrical  
Products

Meters

Transformer

Telecommunication

Renewable  
Energy

Project  
Development

Export



SCAN QR CODE TO VISIT WEBSITE



[www.elsewedyelectric.com](http://www.elsewedyelectric.com)

ELSEWEDY ELECTRIC